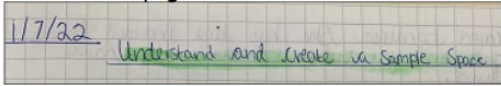
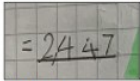


Presentation Expectations

- Dates and Titles **must** be underlined with a ruler.
 - If you have less than half a page, start at the top of the next page.



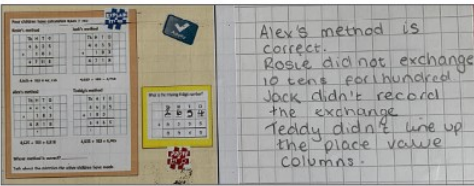
- One digit to be written in each box.



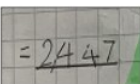
- All drawings, tables, charts, bar models etc to be drawn with a pencil and a ruler.



- Glue any sheets in neatly. Unless instructed by your teacher, never write on the sheets. Use the boxes in your book to show clear working out, clearly labeling the question.



- Underline your final answer with a ruler.



- Never write two or more equal signs on a line for the same question.

Example

$$15 + 3 = 18 + 2 = 20$$

$$18 = 20 = 20$$

Why is this mathematically incorrect?

You are saying
'18 is equal to 20'
'18 is the same as 20'

You must set your work out like this, each calculation underneath each other starting in the same column.

$$15 + 3 = 18$$

$$18 + 2 = 20$$

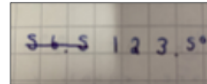
- Leave a line between each question - think about the space you have on your page.

$$70 - 7 = 63$$

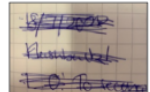
$$63 \div 3 = 21$$

$$63 - 21 = 42$$

- If you have made an error use only one line to cross out.



This is unacceptable



- Remember to use purple pen when improving your work or to make corrections.

This would be wrong as, if you have a 9 in the tens column you have to multiply it and add 1 to the hundreds column.

- All work must start at the left hand side of the page.

